

Capsule Slip Rings

| We are dedicated to provides the best & competitive solutions to valued customers



Expertise at your service

Beyo Ttransfer is a slip ring and rotary unions manufacturer for over 15years, located in Hangzhou, China. We are a leadig slip ring manufacturer, specializig in the desing and production of high-quality rotaty solutions for various industries. With a focus on precision engineering and cutting-edge technology, we provide reliable solutions to meet our customers' diverse rotational needs. We take pride in our commitment to excellence and customer satisfaction.

Our slip rings and rotary joints are applied from electronic industry and mechanical industry and automation and motion control industries from standard to customize, which produced under ISO9001:2015 and certificates of CE and RoHS etc.,.

Beyotransfer has many highly qualified engineers and product specialists make sure our quick repose and professional advice to your individual requirements.

Test Equipments

Three coordinate Measuring



High and Low Temperature Test



High Voltage Insulation Test



Water Proof Test



Salt Spray Test



Dynamic Resistance Tester



Shock and Vibration Test



Life-span Test



Temperature Rise Test



Management&Service

Digital Model

Leveraging a solid theoretical foundation, Beyotransfer possesses expertise in material properties, friction brushes, current, and signal analysis. In the development of our platform products, we prioritize the utilization of our company's advanced algorithms to simulate and calculate the theoretical lifespan of slip rings.



Product Validation

We validate the theoretical lifespan derived from mathematical models through practical lifespan and performance testing of each product series.



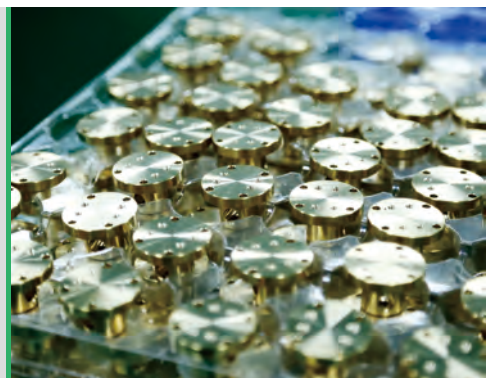
Design

A professional R&D team will develop detailed product schematic drawings based on the customer's actual requirements, utilizing advanced computer-aided design software. Through meticulous schematic design, R&D can provide accurate references for subsequent production processes, ensuring that the product quality and performance meet the customer's expectations.



Stringent quality control

Leading the industry through innovation, shaping the future through quality. With our professional R&D team, we are dedicated to continuous improvement and upgrades of materials, providing you with the latest and best products. We uphold rigorous quality control to ensure that every raw material meets the expected standard of perfection.



Management&Service

Machining

The company owns over a dozen advanced CNC machine tools for production. These CNC machine tools utilize computer control systems, allowing automated processing based on pre-set programs. This significantly enhances both production efficiency and product quality while ensuring the precision and consistency of each component. It lays a solid foundation for the final product quality.



Modular Spare Parts

By adopting a modular design approach for non-standard products, we are able to more flexibly meet individualized customer requirements while simultaneously reducing production costs and enhancing productivity. Our comprehensive spare parts inventory system ensures timely supply of required components, thereby facilitating smoother and more efficient production processes.



Assembly

Utilizing the principles of lean manufacturing, employing integrated design and assembly line operations to ensure high product quality, efficiency, and timely delivery.



Testing

We have a well-established quality management system with tight control over Incoming Quality Control (IQC), In-Process Quality Control (IPQC), and Outgoing Quality Control (OQC). We extensively utilize computer-controlled automated testing equipment to ensure high efficiency and high quality.



Our advantages

Superior Quality

We adhere to stringent quality standards throughout our manufacturing process to ensure that our slip rings meet and exceed industry benchmarks. Each slip ring is meticulously tested for durability, functionality, and reliability.



The Widest Range

Our extensive solutions comprises over 300 standard and 400 custom electrical rotary joint models, along with 100 standard and 150 custom fluidic rotary joint models, 100 standard of RF rotary joints and fiber optical rotary joints, this wide array offers countless combinations to meet diverse requirements.



Cost Effective

A wide range of standard models and solutions ensures seamless integration with your specific applications, with extensive design expertise, we've successfully standardized custom solutions, ensuring top quality while significantly lowering costs at every stage. Experience the cost-effective advantage with our tailored offerings.



Customization

We offer a wide range of customization options to tailor our slip rings precisely to your unique requirements. Our team of engineers works closely with you to understand your application and design a slip ring solution that seamlessly integrates with your system.



Industries

Energy



Wind turbines
Single crystal furnace
Nuclear electricity generation
Small windmill

Heavy Equipment



Piling machinery
Fire-fighting equipment
Excavators
Port machinery
Cranes

Packaging



Food&beverage
Filling&labelling
Packaging
Capping
Scales

Recreation Facilities



Ferris wheel
Merry-go-round
Flying horse
Big pendulum

Charing Pile



Charing Pile

Robotics



Industry robot
Legged robot
Welding robot
3D scanner robot

Metallurgical Equipment



Ladle turntable
Precision casting equipment
Hydraulic oil cylinder factory
Automated Metallurgical Production Line

Medical



Mobile tools
Pharm&beauty
Diagnosis
Radiology
Odontology

Converting



Rotogravure
Plane printing
Digital ink jet
Offset printing
Flexographic printing

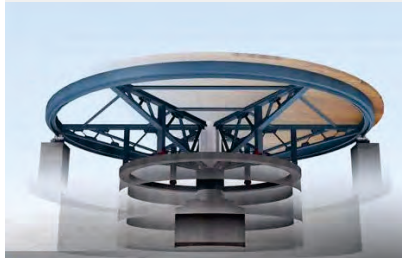
Industries

Cable Reel



Cable reels
Cable winches

Revolving Lighting&Door



Rotating stage
Rovolving doors
Rotating LED light

Cutting&Polishing Machinery



Cutting equipments
Automatic polishing equipments
Ceramic machinery
Stone machinery
Automatic diamond grinding machine

Surveillance&Video



CCTV cameras
Speed dome camera
Crawler
Underwater television

Machine Tool



Lathe machines
Machine centre
Press machines
Sheet metal forming
Electrical discharge

Measurement



Total station
Viscosity meter
Measurement instruments
Geological measuring instruments

Marine



Offershore

Radar&antenna



Radar
Broadcasting veichles
Unmanned Vehichles
Satellite systems

Military&Defense



Tank
Plane pod
Rotary table
Turret rotation system

BSC Series

Miniature&Capsule Slip Rings



COST-EFFECTIVE | COMPACT DESIGN | HIGH POWER | OPTIMAL SIGNAL TRANSMISSION



The capsule slip ring BSC Series is a kind of compact slip ring, gold to gold contact material for both rings and brushes to ensure minimize electrical noise and interference. This series has been designed keeping cost-effectiveness and reliability idea which supports in a wide range of standard models from OD 5.5mm to 25mm, and is available to transmit 1 to 82 circuits.

BSC series is not only transmit signal but also high power up to 30A@240VAC with a compact design as well.

Benefits

- Cost-effective
- Low torque
- Free maintenance
- Stable transmit 1~82 channels signal
- IP 51 (IP65 can be customized)
- Integrated compact design for easy installation
- Standard model and customization are available
- Support Combination with RF/fiber optic rotary joint
- Gold to gold contact material ensure long life and low friction

Main application

- Fishing gear
- 3D Printer
- Cable reels
- Packaging
- Rotary table
- Wind turbine
- Machine tools
- Labeling machines
- Capping machines
- Automatic machines
- Converting machines
- Exhibit /display equipment
- Medical,Pharmaceutical equipment
- Robotics,urgent illumination equipment

Part code

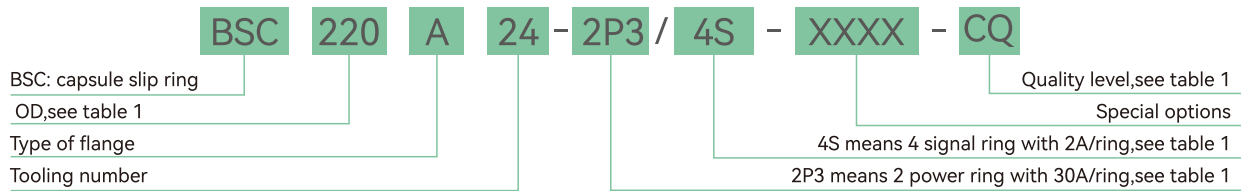


Table 1

OD	power and signal explain	Quality level
055: OD 5.5mm 075: OD 7.5mm 079: OD 7.9mm, 124: OD 12.4mm 142: OD 14.2mm 155: OD 15.5mm, 220: OD 22mm 250: OD 25mm	P for 10A/ring P1 for 15A/ring P2 for 20A/ring P3 for 30A S for 2A/ring S1 for 5A/ring	CQ: common quality HQ: high quality SQ: super quality

Standard Model for BSC Series

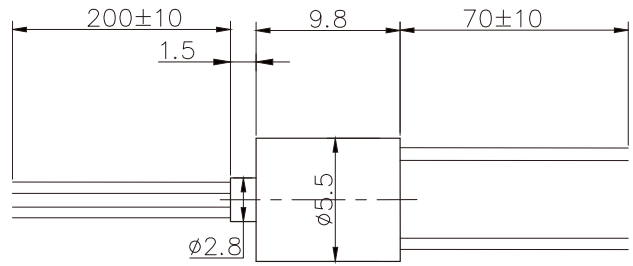
Model	OD(mm)	No. of Rings	Rated Current	Rated Voltage	RPM	IP rating
BSC055	5.5	1~8	1A	240VDC/VAC	0~300	IP51
BSC075	7.5	1~8	1A	240VDC/VAC	0~300	IP51
BSC079	7.9	1~8	1A	240VDC/VAC	0~300	IP51
BSC090	9.0	1~8	1A	240VDC/VAC	0~300	IP51
BSC110	11.0	1~8	1A	240VDC/VAC	0~300	IP51
BSC124	12.4	1~18	2A~6A	240VDC/VAC	0~300	IP51
BSC142	14.2	1~4	2A~10A	240VDC/VAC	0~300	IP51
BSC155	15.5	1~24	2A~10A	240VDC/VAC	0~300	IP51
BSC210	21.0	1~36	2A~10A	240VDC/VAC	0~300	IP51
BSC220	22.0	1~36	2A~20A	240VDC/VAC	0~300	IP51
BSC250	25.0	1~82	2A~20A	240VDC/VAC	0~200	IP51

Wire Color Code

Rings#	1	2	3	4	5	6	7	8	9	10	11	12
Color	RED	YEL	BLK	BLU	GRN	WHT	PUP	GRY	BRN	ORN	DBLU	KHK
Rings#	13	14	15	16	17	18	19	20	21	22	23	24
Color	WHT -RED	WHT -BLK	WHT -BLU	WHT -PUP	WHT -BRN	WHT -GRN	WHT -ORN	WHT -GRY	WHT -RED	WHT -RED	WHT -BLU	WHT -GRN

Note: 24 wires for 1 group color, from 25-48, repeat the same color as 1 to 24, or indicated by number code pipe.

BSC055



Specifications

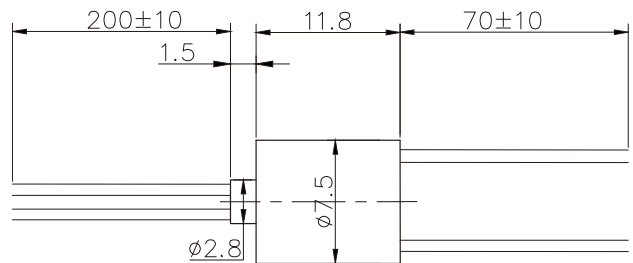
Electrical Data		Mechanical Data	
No. Of Circuits	1~8 channels	Outer Diameter	5.5mm
Rated Voltage	240VAC/VDC	Working Speed	0-300rpm
Rated Current	1A/ring	Housing Material	Aluminum alloy
Dielectric Strength	500VAC@50HZ,60S	Contact material	Precious material
Insulation Resistance	500MΩ/500VDC	Working Temperature	-20°C~+80°C
Electrical Noise	< 0.01Ω	Working Humidity	60% RH or higher
Lead Length	Rotor 200mm, stator 70mm	IP rating	IP51
Lead Size	Sliver plated Teflon colour coded AWG28(1A)	Bearing	Miniature high-precision stainless steel ball bearings

Model list

Model	Number of Rings	Rated Current	Length (mm)
BSC055-2	2	1A	9.8
BSC055-4	4	1A	9.8

Model	Number of Rings	Rated Current	Length (mm)
BSC055-6	6	1A	9.8
BSC055-8	8	1A	9.8

BSC075



Specifications

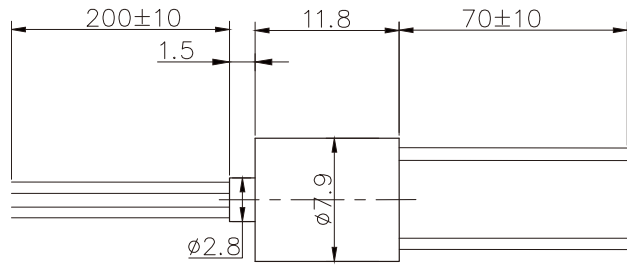
Electrical Data		Mechanical Data	
No. Of Circuits	1~8 channels	Outer Diameter	7.5mm
Rated Voltage	240VAC/VDC	Working Speed	0-300rpm
Rated Current	1A/ring	Housing Material	Aluminum alloy
Dielectric Strength	500VAC@50HZ,60S	Contact material	Precious material
Insulation Resistance	500MΩ/500VDC	Working Temperature	-20°C~+80°C
Electrical Noise	< 0.01Ω	Working Humidity	60% RH or higher
Lead Length	Rotor 200mm, stator 70mm	IP rating	IP51
Lead Size	Sliver plated Teflon colour coded AWG28(1A)	Bearing	Miniature high-precision stainless steel ball bearings

Model list

Model	Number of Rings	Rated Current	Length (mm)
BSC075-2	2	1A	11.8
BSC075-4	4	1A	11.8

Model	Number of Rings	Rated Current	Length (mm)
BSC075-6	6	1A	11.8
BSC075-8	8	1A	11.8

BSC079



Specifications

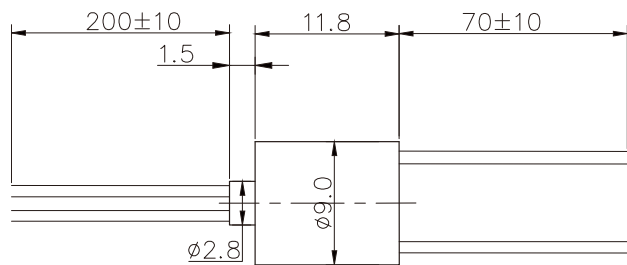
Electrical Data		Mechanical Data	
No. Of Circuits	1~8 channels	Outer Diameter	7.9mm
Rated Voltage	240VAC/VDC	Working Speed	0~300rpm
Rated Current	1A/ring	Housing Material	Aluminum alloy
Dielectric Strength	500VAC@50HZ,60S	Contact material	Precious material
Insulation Resistance	500MΩ/500VDC	Working Temperature	-20°C~+80°C
Electrical Noise	< 0.01Ω	Working Humidity	60% RH or higher
Lead Length	Rotor 200mm, stator 70mm	IP rating	IP51
Lead Size	Sliver plated Teflon colour coded AWG28(1A)	Bearing	Miniature high-precision stainless steel ball bearings

Model list

Model	Number of Rings	Rated Current	Length (mm)
BSC079-2	2	1A	11.8
BSC079-4	4	1A	11.8

Model	Number of Rings	Rated Current	Length (mm)
BSC079-6	6	1A	11.8
BSC079-8	8	1A	11.8

BSC090



Specifications

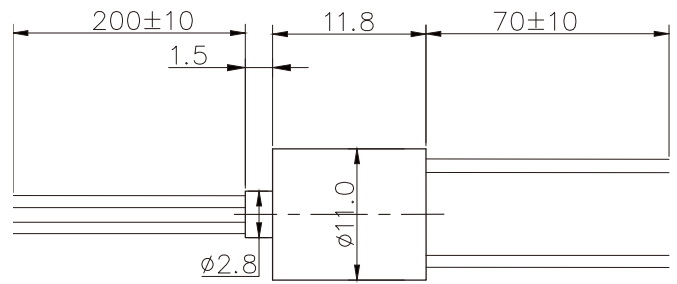
Electrical Data		Mechanical Data	
No. Of Circuits	1~8 channels	Outer Diameter	9mm
Rated Voltage	240VAC/VDC	Working Speed	0~300rpm
Rated Current	1A/ring	Housing Material	Aluminum alloy
Dielectric Strength	500VAC@50HZ,60S	Contact material	Precious material
Insulation Resistance	500MΩ/500VDC	Working Temperature	-20°C~+80°C
Electrical Noise	< 0.01Ω	Working Humidity	60% RH or higher
Lead Length	Rotor 200mm, stator 70mm	IP rating	IP51
Lead Size	Sliver plated Teflon colour coded AWG28(1A)	Bearing	Miniature high-precision stainless steel ball bearings

Model list

Model	Number of Rings	Rated Current	Length (mm)
BSC090-2	2	1A	11.8
BSC090-4	4	1A	11.8

Model	Number of Rings	Rated Current	Length (mm)
BSC090-6	6	1A	11.8
BSC090-8	8	1A	11.8

BSC110



Specifications

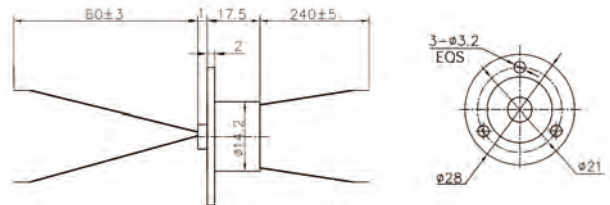
Electrical Data		Mechanical Data	
No. Of Circuits	1~8 channels	Outer Diameter	11mm
Rated Voltage	240VAC/VDC	Working Speed	0-300rpm
Rated Current	1A/ring	Housing Material	Aluminum alloy
Dielectric Strength	500VAC@50HZ,60S	Contact material	Precious material
Insulation Resistance	500MΩ/500VDC	Working Temperature	-20°C~+80°C
Electrical Noise	< 0.01Ω	Working Humidity	60% RH or higher
Lead Length	Rotor 200mm, stator 70mm	IP rating	IP51
Lead Size	Sliver plated Teflon colour coded AWG28(1A)	Bearing	Miniature high-precision stainless steel ball bearings

Model list

Model	Number of Rings	Rated Current	Length (mm)
BSC0110-2	2	1A	11.8
BSC0110-4	4	1A	11.8

Model	Number of Rings	Rated Current	Length (mm)
BSC0110-6	6	1A	11.8
BSC0110-8	8	1A	11.8

BSC142



Specifications

Electrical Data		Mechanical Data	
No. Of Circuits	1~4 channels	Outer Diameter	14.2mm
Rated Voltage	240VAC/VDC	Working Speed	0-250rpm
Rated Current	5A or 10A/ring	Housing Material	Engineering plastic
Dielectric Strength	500VAC@50HZ,60S	Contact material	Gold to Gold
Insulation Resistance	500MΩ/500VDC	Working Temperature	-20°C~+80°C
Electrical Noise	< 0.01Ω	Working Humidity	60% RH or higher
Lead Length	stator 240mm, stator 60mm	IP rating	IP51
Lead Size	Sliver plated Teflon colour coded AWG28(1A)	Bearing	Miniature high-precision stainless steel ball bearings

Model list

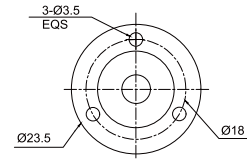
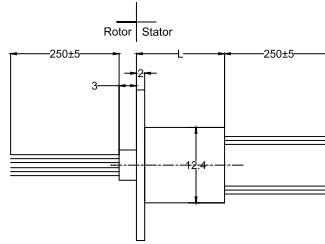
Model	Rated Current (5A)	Rated Current (10A)	Length (mm)
BSC142-3P	/	3	17.5
BSC142-2P	/	2	17.5
BSC142-2P/2S	2	2	17.5
BSC142-3S	3	/	17.5

Product Quality Level Sheet

Quality level	Product level code	Lifespan
Common Quality	CQ	2 million revolutions
High Quality	HQ	5 million revolutions

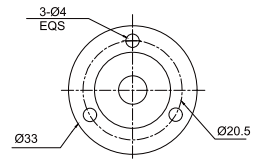
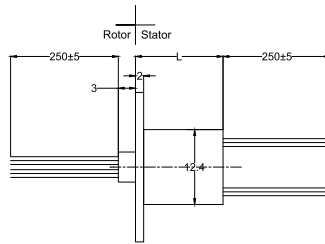
BSC124A

BSC124A-6	L=14.0mm
BSC124A-12	L=18.6mm
BSC124A-18	L=23.0mm



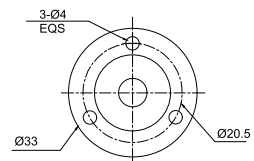
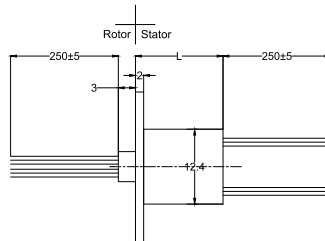
BSC124B

BSC124B-6	L=14.0mm
BSC124B-12	L=18.6mm
BSC124B-18	L=23.0mm



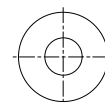
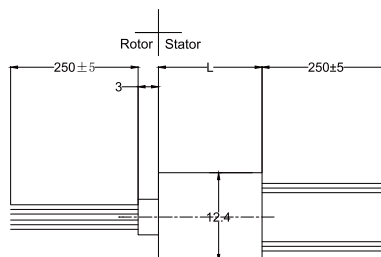
BSC124C

BSC124C-6	L=14.0mm
BSC124C-12	L=18.6mm
BSC124C-18	L=23.0mm



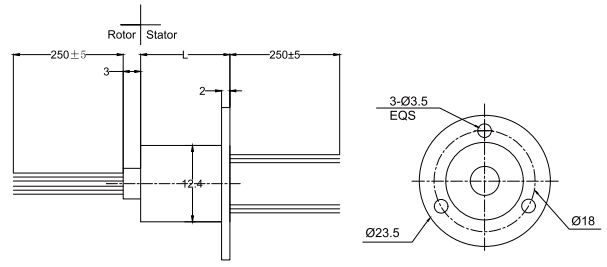
BSC124D

BSC124D-6	L=14.0mm
BSC124D-12	L=18.6mm
BSC124D-18	L=23.0mm



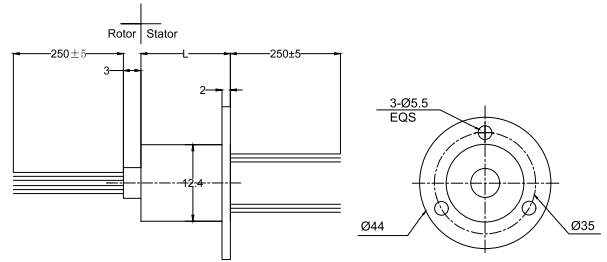
BSC124E

BSC124E-6	L=14.0mm
BSC124E-12	L=18.6mm
BSC124E-18	L=23.0mm



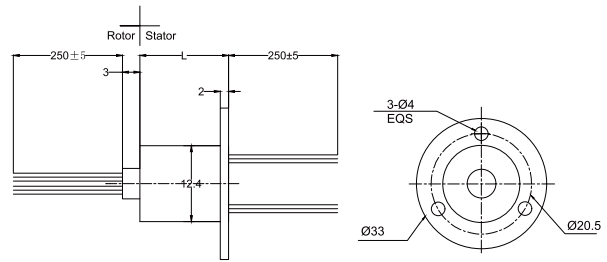
BSC124F

BSC124F-6	L=14.0mm
BSC124F-12	L=18.6mm
BSC124F-18	L=23.0mm



BSC124G

BSC124G-6	L=14.0mm
BSC124G-12	L=18.6mm
BSC124G-18	L=23.0mm



Specifications

Electrical Data		Mechanical Data	
No. Of Circuits	1~18 channels	Outer Diameter	12.4mm
Rated Voltage	240VAC/VDC	Working Speed	0-300rpm
Rated Current	2A/ring	Housing Material	Engineering plastic
Dielectric Strength	500VAC@50HZ,60S	Contact material	Gold to Gold or Precious material (base on quality level)
Insulation Resistance	500MΩ/500VDC	Working Temperature	-20°C~+80°C
Electrical Noise	< 0.01Ω	Working Humidity	60% RH or higher
Lead Length	250mm on both stator and rotor	IP rating	IP51~IP54
Lead Size	Sliver plated Teflon colour coded AWG28(2A)	Bearing	Miniature high-precision stainless steel ball bearings

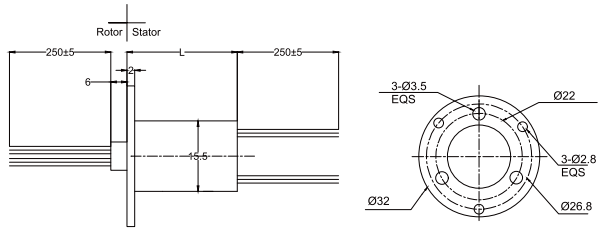
Model list

Model	Number of Rings	Rated Current	Length (mm)
BSC124-6	6	2A	14.0
BSC124-8	8	2A	18.6
BSC124-12	12	2A	18.6
BSC124-18	18	2A	23.0

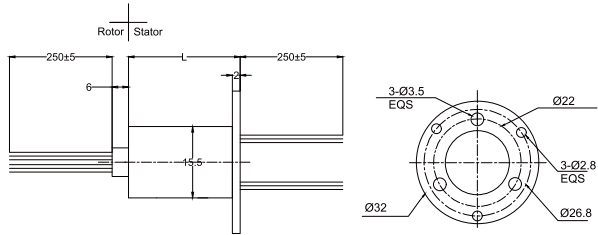
Product Quality Level Sheet

Quality level	Product level code	Lifespan
Common Quality	CQ	2 million revolutions
High Quality	HQ	5 million revolutions
Super Quality	SQ	8 million revolutions

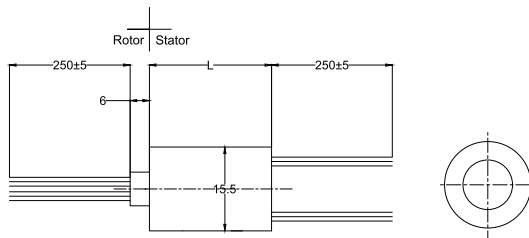
BSC155A



BSC155B



BSC155C



Specifications

Electrical Data		Mechanical Data	
No. Of Circuits	1~24 channels	Outer Diameter	15.5mm
Rated Voltage	240VAC/VDC	Working Speed	0-300rpm
Rated Current	2A~10A/ring	Housing Material	Engineering plastic
Dielectric Strength	500VAC@50HZ,60S	Contact material	Gold to Gold or Precious material (base on quality level)
Insulation Resistance	500MΩ/500VDC	Working Temperature	-20°C~+80°C
Electrical Noise	< 0.01Ω	Working Humidity	60% RH or higher
Lead Length	250mm on both stator and rotor	IP rating	IP51~54
Lead Size	Sliver plated Teflon colour coded AWG28(2A)/AWG16(10A)	Bearing	Miniature high-precision stainless steel ball bearings

Model list

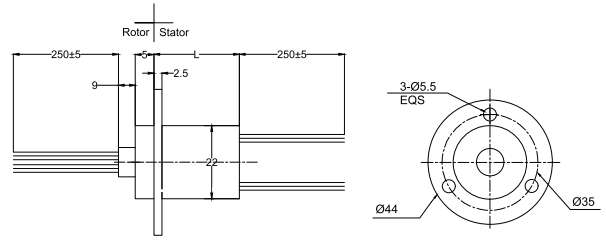
Model	Rated Current		Length (mm)
	Signal 2A/ring	Power 10A/ring	
BSC155-6S	6	-	34.0
BSC155-12S	12	-	34.0
BSC155-15S	15	-	34.0
BSC155-18S	18	-	34.0
BSC155-24S	24	-	34.0
BSC155-2P/4S	4	2	34.0

Product Quality Level Sheet

Quality level	Product level code	Lifespan
Common Quality	CQ	2 million revolutions
High Quality	HQ	5 million revolutions

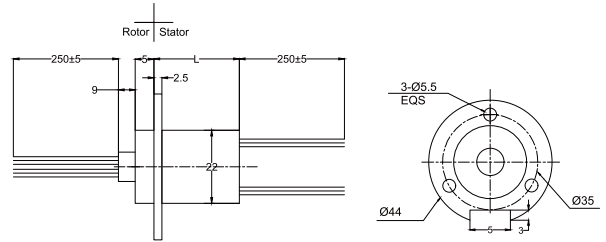
BSC220A

BSC220A-12	L=25.6mm
BSC220A-18	L=33.4mm
BSC220A-24	L=41.2mm
BSC220A-30	L=49.0mm



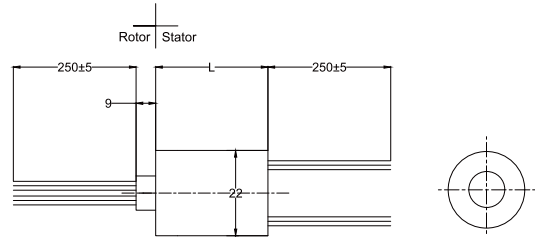
BSC220B

BSC220B-12	L=25.6mm
BSC220B-18	L=33.4mm
BSC220B-24	L=41.2mm
BSC220B-30	L=49.0mm



BSC220C

BSC220C-12	L=25.6mm
BSC220C-18	L=33.4mm
BSC220C-24	L=41.2mm
BSC220C-30	L=49.0mm



Specifications

Electrical Data		Mechanical Data	
No. Of Circuits	1~30 channels	Outer Diameter	22mm
Rated Voltage	240VAC/VDC	Working Speed	0-250rpm
Rated Current	2A~30A/ring	Housing Material	Engineering plastic
Dielectric Strength	500VAC@50HZ,60S	Contact material	Gold to Gold or Precious material (base on quality level)
Insulation Resistance	500MΩ/500VDC	Working Temperature	-20°C~+80°C
Electrical Noise	< 0.01Ω	Working Humidity	60% RH or higher
Lead Length	250mm on both stator and rotor	IP rating	IP51~65
Lead Size	Sliver plated Teflon colour coded AWG26(2A)/AWG22(5A)/AWG16(10A) /AWG14(15A)/AWG12(20A)/AWG10(30A)	Bearing	Miniature high-precision stainless steel ball bearings

Product Quality Level Sheet

Quality level	Product level code	Lifespan
High Quality	HQ	5 million revolutions
Supper Quality	SQ	8 million revolutions

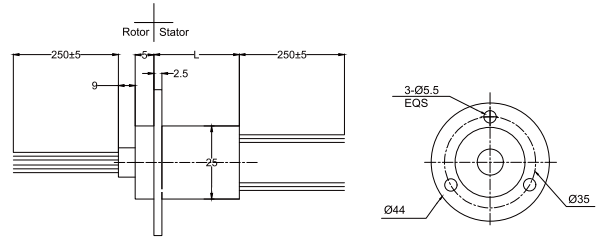
Model list

Model	Rated Current						Length (mm)
	2A/ring	5A/ring	10A/ring	15A/ring	20A/ring	30A/ring	
BSC220-12-12S	12	/	/	/	/	/	25.6
BSC220-12-2P2/4S	4	/	/	2	/	/	25.6
BSC220-12-2P/3S	3	/	2	/	/	/	25.6
BSC220-12-4S1	/	4	/	/	/	/	25.6
BSC220-12-3P	/	/	3	/	/	/	25.6
BSC220-12-2P1	/	/	/	2	/	/	25.6
BSC220-12-2P2	/	/	/	/	2	/	25.6
BSC220-18-18S	18	/	/	/	/	/	33.4
BSC220-18-2P1/10S	10	/	/	2	/	/	33.4
BSC220-18-2P1/6S	6	/	/	2	/	/	33.4
BSC220-18-3P/6S	6	/	3	/	/	/	33.4
BSC220-18-6S1	/	6	/	/	/	/	33.4
BSC220-18-2P2/3S	3	/	/	/	2	/	33.4
BSC220-18-4P1	/	/	/	4	/	/	33.4
BSC220-18-2P1/S1	/	2	/	2	/	/	33.4
BSC220-18-4P	/	/	4	/	/	/	33.4
BSC220-18-2P3	/	/	/	/	/	2	33.4
BSC220-24-24S	24	/	/	/	/	/	41.2
BSC220-24-2P/20S	20	/	2	/	/	/	41.2
BSC220-24-4P/16S	16	/	4	/	/	/	41.2
BSC220-24-3P1/15S	15	/	/	3	/	/	41.2
BSC220-24-4P/12S	12	/	4	/	/	/	41.2
BSC220-24-4P2/4S	4	/	/	/	4	/	41.2
BSC220-24-2P2/6S1	/	6	/	/	2	/	41.2
BSC220-24-2P3/4S	4	/	/	/	/	2	41.2
BSC220-24-6P	/	/	6	/	/	/	41.2
BSC220-30-30S	30	/	/	/	/	/	49.0
BSC220-30-4P/20S	20	/	4	/	/	/	49.0
BSC220-30-4P1/12S	12	/	/	4	/	/	49.0
BSC220-30-2P3/8S	8	/	/	/	/	2	49.0

BSC250A



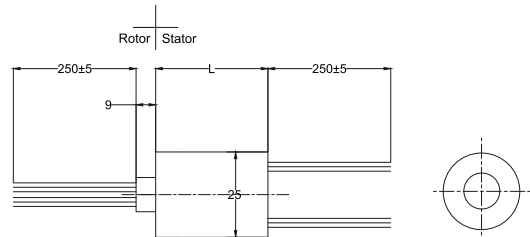
BSC250A-30	L=51.0mm
BSC250A-37	L=60.5mm
BSC250A-47	L=73.5mm
BSC250A-59	L=89.5mm
BSC250A-82	L=89.5mm



BSC250B



BSC250B-30	L=51.0mm
BSC250B-37	L=60.5mm
BSC250B-47	L=73.5mm
BSC250B-59	L=89.5mm
BSC250B-82	L=89.5mm



Specifications

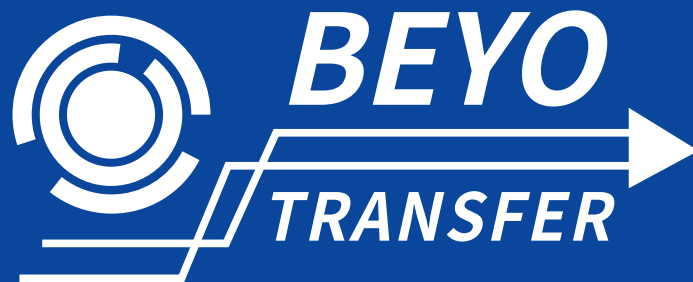
Electrical Data		Mechanical Data	
No. Of Circuits	1~82 channels	Outer Diameter	25mm
Rated Voltage	240VAC/VDC	Working Speed	0~200rpm
Rated Current	2A~20A/ring	Housing Material	Engineering plastic or aluminum alloy
Dielectric Strength	500VAC@50HZ,60S	Contact material	Gold to Gold or Precious material (base on quality level)
Insulation Resistance	500MΩ/500VDC	Working Temperature	-20°C~+80°C
Electrical Noise	< 0.01Ω	Working Humidity	60% RH or higher
Lead Length	250mm on both stator and rotor	IP rating	IP51~65
Lead Size	Sliver plated Teflon colour coded AWG26(2A)/AWG16(10A)/AWG12(20A)	Bearing	Miniature high-precision stainless steel ball bearings

Product Quality Level Sheet

Quality level	Product level code	Lifespan
High Quality	HQ	2 million revolutions
Supper Quality	SQ	5 million revolutions

Model list

Model	Rated Current			Length (mm)
	2A/ring	5A/ring	10A/ring	
BSC250-30-30S	30	/	/	51.0
BSC250-30-2P/16S	16	2	/	51.0
BSC250-30-3P/9S	9	3	/	51.0
BSC250-30-4P/2S	2	4	/	51.0
BSC250-30-2P2	/	/	2	51.0
BSC250-30-2P/18S	18	2	/	51.0
BSC250-30-3P/15S	15	3	/	51.0
BSC250-30-4P/12S	12	4	/	51.0
BSC250-30-5P/8S	8	5	/	51.0
BSC250-30-6P/5S	5	6	/	51.0
BSC250-30-7P/2S	2	7	/	51.0
BSC250-30-8P	/	8	/	51.0
BSC250-30-2P2/12S	12	/	2	51.0
BSC250-30-3P2/5S	5	/	3	51.0
BSC250-30-4P2	/	/	4	51.0
BSC250-37-37S	37	/	/	60.5
BSC250-37-2P/23S	23	2	/	60.5
BSC250-37-3P/16S	16	3	/	60.5
BSC250-37-4P/9S	9	4	/	60.5
BSC250-37-5P/2S	2	5	/	60.5
BSC250-37-2P2/7S	7	/	2	60.5
BSC250-37-2P/25S	25	2	/	60.5
BSC250-37-3P/21S	21	3	/	60.5
BSC250-37-4P/17S	17	4	/	60.5
BSC250-37-5P/13S	13	5	/	60.5
BSC250-37-6P/10S	10	6	/	60.5
BSC250-37-7P/6S	6	7	/	60.5
BSC250-37-8P/3S	3	8	/	60.5
BSC250-37-2P2/23S	23	/	2	60.5
BSC250-37-3P2/19S	19	/	3	60.5
BSC250-37-4P2/15S	15	/	4	60.5
BSC250-47-47S	47	/	/	73.5
BSC250-47-2P/27S	27	2	/	73.5
BSC250-47-3P/23S	23	3	/	73.5
BSC250-47-4P/19S	19	4	/	73.5
BSC250-47-5P/12S	12	5	/	73.5
BSC250-47-6P/5S	5	6	/	73.5
BSC250-47-2P2/17S	17	/	2	73.5
BSC250-47-3P2/2S	2	/	3	73.5
BSC250-47-6P2/10S	10	/	5	73.5
BSC250-47-6P2/5S	5	/	6	73.5
BSC250-59-59S	59	/	/	89.5
BSC250-82-82S	82	/	/	89.5



Hangzhou Beyotransfer Technology Co.,Ltd.

Website: www.beyotrans.com

Email: info@beyotrans.com

Telephone: 86 571 86018068

Phone: 86 15988839994

WhatsApp: 86 15988839994

Address: No.2433 Building 6 Xiyueting Huanlecheng,
Nanyuan Street, Hangzhou 311199,
Zhejiang China